

Eagle URA et al. sign MOA, issue RFP for engineering services for right-in, right-access on north side of SH-44 between N. Eagle Road and Edgewood Lane and roadway connecting to Plaza Drive extension

By Jeff Kunz, Eagle Urban Renewal Agency Chairman

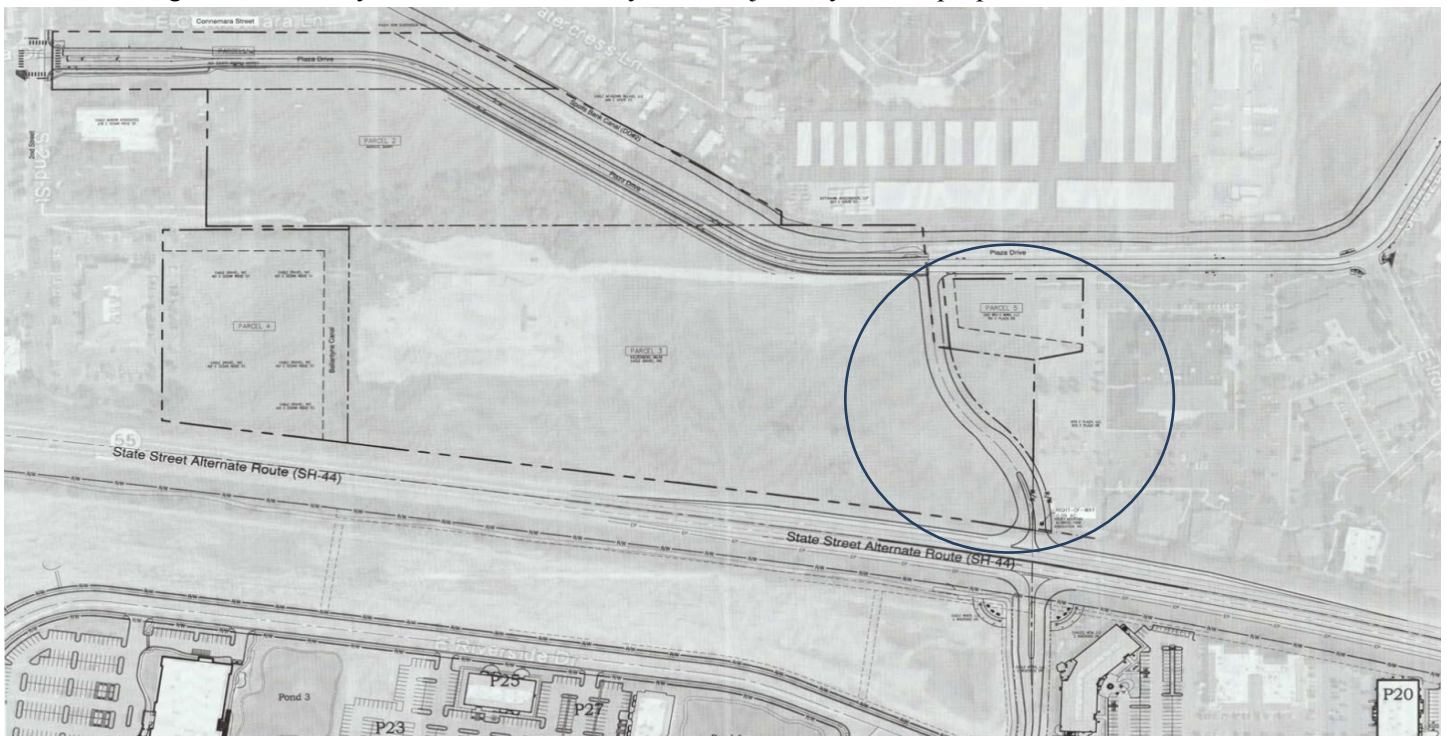
EAGLE – The Eagle Urban Renewal Agency (EURA), the City of Eagle, the Eagle Fire Protection District and Eagle 26, LLC/Pacific West Communities, Inc. executed a Memorandum of Agreement (MOA) for engineering services, defined as the preparation of engineering construction drawings and an estimate of construction costs, for a right-in, right-out access generally located on the north side of State Highway 44 halfway between N. Eagle Road and Edgewood Lane and a collector roadway connecting the right-in, right-out access to the Plaza Drive extension. The cost of performing the engineering services is estimated at approximately \$35,000. The cost of the engineering services will be shared equally among the four stakeholders.

The engineering construction drawings and an estimate of construction costs are prerequisites to the Idaho Transportation Department (ITD) approving and issuing a permit for the right-in, right-out access and to the Ada County Highway District (ACHD) authorizing construction of a collector roadway connecting the right-in, right-out access to the Plaza Drive extension. The agreement does not constitute a commitment by any of the stakeholders to proceed with further engineering services or any development of the property or construction of improvements.

The EURA worked with the stakeholders on the preparation and issuance of a Request for Proposals (RFP) for the engineering services. The RFP was issued by the EURA on April 6, 2016.

The EURA will seek the services of a qualified engineering firm, will receive the responses to the RFP and will allow a committee comprised of one representative from each of the four stakeholders to review the responses and to make a recommendation to the EURA regarding the selection of an engineering firm to perform the desired services.

The EURA may also utilize a committee to evaluate and determine the comparative merits of each of the proposals received. However, the EURA has ultimate decision-making authority regarding the RFP, the responses received and the final determination of which engineering firm will be selected. The EURA will contract with the engineering firm it deems best suited to perform the engineering work, if any. The EURA anticipates completion of the selection process and approval of a professional services agreement for engineering services in early May 2016, but reserves the right to extend any deadlines as necessary and to reject any and all proposals.



The general diagram shows the location (within the circle) of the proposed right-in, right-out access on the north side of State Highway 44 halfway between N. Eagle Road and Edgewood Lane and a collector roadway connecting to the Plaza Drive extension. Credit: Eagle 26, LLC/Pacific West Communities, Inc.